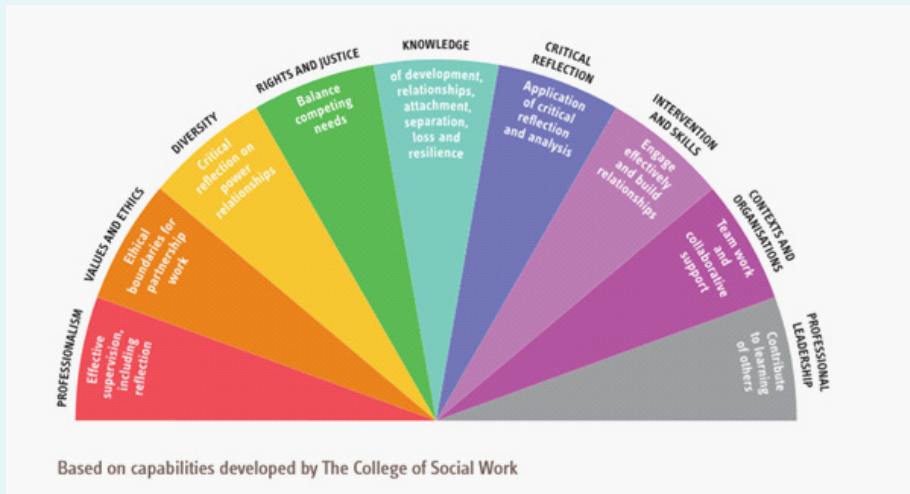




## Case study five:

# Tool 2 - Social Work capabilities for attachment-aware practice

This tool sets out the social work capabilities in the Professional Capabilities Framework that relate to attachment-aware practice. You can use this to consider your own practice and learning needs.



Where do I need to develop my practice?

How will I do this?

What are my strengths in relationship-based working?

What support do I need?

This tool is taken from RiPfa (2015) Frontline: Attachment-aware practice